

\* BE INSPIRED

**SATAB** COLLECTION PRINTEMPS-ÉTÉ 2024



HUMBLE

# Enhanced Rusticity

Cords, braided jacquards, linen fringe...



Ref: 0777- Col: 272 - 10 mm RESPECT LINE



Ref: 4040- Col: 201 - 10 mm



Ref: 3865- Col: 2 - 6 mm



Ref: 4002- Col: 245 - 4mm



Ref: 7447- Col: 104 - 22 mm



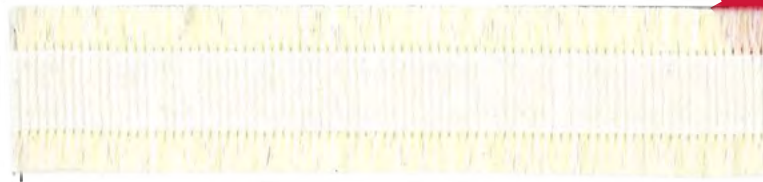
Ref: 4012- Col: 199 - 6 mm RESPECT LINE



Ref: 6964- Col: 2 - 16 mm



**NEW** Ref: 0851- Col: 272 - 4 mm RESPECT LINE



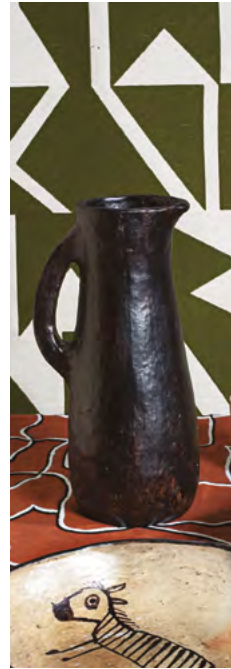
**NEW** Ref: 1506 - Col: 272 - 22 mm



Ref: 3886 Col: 488 - 12 mm

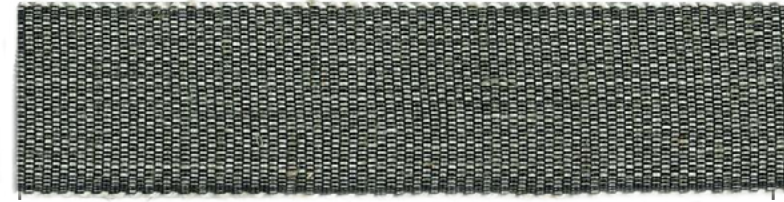


Ref: 7341- Col: 488 - 22 mm



# Enhanced Rusticity

Rustic grosgrains, heathers, tweed...



Ref: 7280 - Col: 38 - 25 mm



**NEW** Ref: 7248 - Col: 201 - 15 mm



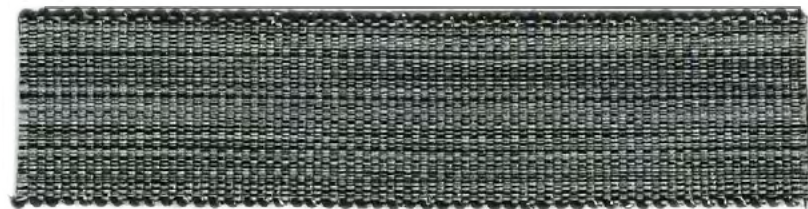
**NEW** Ref: 1336 - Col: 233 - 15 mm



**NEW** Ref: 1565 - Col: 800 - 27 mm



Ref: 7432 - Col: 272- 25 mm



Ref: 7432 - Col: 233- 25 mm



Ref: 7336 - Col: 199 - 25 mm **RESPECT LINE**

HUMBLE

# Denim Rush

Twill, herringbone ...



Ref: 0792 - Col: 5 - 30 mm



Ref: 1527 - Col: 9 - 18 mm



Ref: 0733 - Col: 1 - 15 mm



**NEW** Ref: 1718 - Col: 4 - 12 mm



Ref: 0770 - Col: 225 - 30 mm



**NEW** Ref: 2523 - Col: 800 - 15 mm



**NEW** Ref: 1719 - Col: 905 - 10 mm



**NEW** Ref: 2522 - Col: 2 - 13 mm

# Denim Rush

CORDS, PETERSHAM ...



**NEW** Ref: 4029 - Col: 805 - 6 & 10 mm



**NEW** Ref: 4030 - Col: 805 - 10 mm



**NEW** Ref: 4023 - Col: 805 - 6 mm



Ref: 4894 - Col: 329 - 15 mm



**NEW** Ref: 7462 - Col: 6 - 34 mm



**NEW** Ref: 2522 - Col: 4 - 13 mm



**NEW** Ref: 1083 - Col: 961 - 15 mm



**NEW** Ref: 1083 - Col: 961 - 35 mm



# Two-Tone Folklore



Ref: 0844 - Col: 204 - N°30



Ref: 0844 - Col: 204 - N°9



Ref: 7209 - Col: 15 - 10 mm



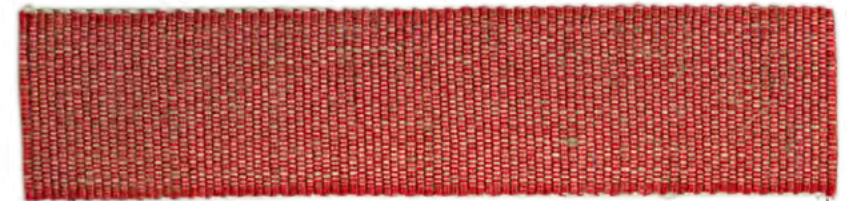
Ref: 7408 - Col: 324 - 12 mm



Ref: 0877 - Col: 204 - 7 mm



**NEW** Ref: 4022 - Col: 3 - 8 mm



Ref: 7280 - Col: 16 - 25 mm



Ref: 3303 - Col: 324 - 25 mm

# Two-Tone Folklore

Naive simplicity



Ref: 7249 - Col: 15 - 15 mm



Ref: 1068 - Col: 204 - 6 mm



Ref: 0072 - Col: 204 - 6 mm



Ref: 1084 - Col: 324 - 10 mm



Ref: 0846 - Col: 204 - N°14



**NEW** Ref: 1719 - Col: 816 - 10 mm



# Rivieria

Never without my hat



Ref: 3082 - Col: 210 - 25 mm



Ref: 7122 - Col: 61 - 15 mm



**NEW** Ref: i729 - Col: 969 - 20 mm

RESPECT LINE



**NEW** Ref: 7248 - Col: 251 - 15 mm



Ref: 7249 - Col: 174 - 30 mm



**NEW** Ref: 7260 - Col: 2 - 15 mm



**NEW** Ref: 7034 - Col: 797 - 25 mm



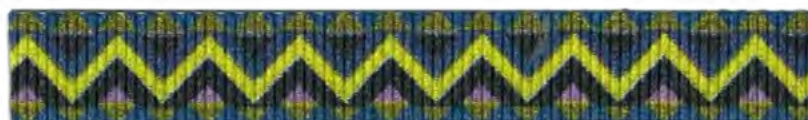
# Secret Garden



**NEW** Ref: i757 - Col: 3 - 30 mm



**NEW** Ref: i729 - Col: 944 - 20 mm **RESPECT LINE**



**NEW** Ref: i726 - Col: 946 - 15 mm **RESPECT LINE**



Ref: 0414 - Col: 318 - 15 mm



**NEW** Ref: 7463 - Col: 4 - 32 mm



**NEW** Ref: 7361 - Col: 279 - 20 mm



**NEW** Ref: 7341 - Col: 549 - 22 mm



**NEW** Ref: 7462 - Col: 3 - 34 mm



Ref: 3303 - Col: 232 - 25 mm

DYNAMIC

# Stripes Mania

Olympic Games



Ref: 3079 - Col: 950 - 22 mm



**NEW** Ref: 7034 - Col: 804 - 25 mm



Ref: 1468 - Col: 3 - 10 mm



Ref: i729 - Col: 948 - 20 mm

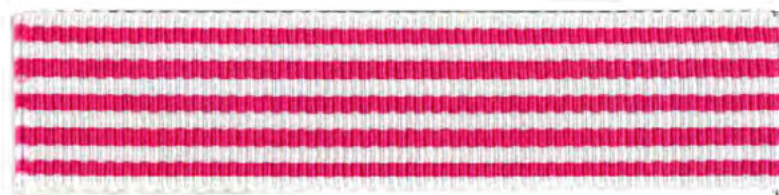


**NEW** Ref: 0821 - Col: 805 - 35 mm **STRETCH**



# Stripes Mania

In total look



Ref: 7339 - Col: 121 - 25 mm



**NEW** Ref: 7034 - Col: 805 - 15 mm



**NEW** Ref: 1718 - Col: 7 - 12 mm



Ref: 1104 - Col: 1 - 10 mm

**NEW** Ref: 1718 - Col: 6 - 12 mm

**NEW** Ref: i755 - Col: 800 - 50 mm



Ref: 3082 - Col: 950 - 15 mm

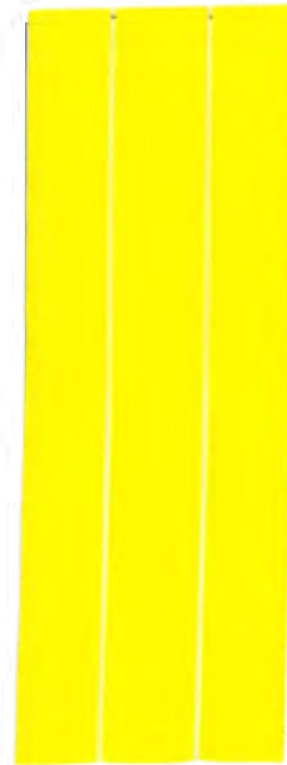


Ref: 0349 - Col: 21 - 10 mm

DYNAMIC

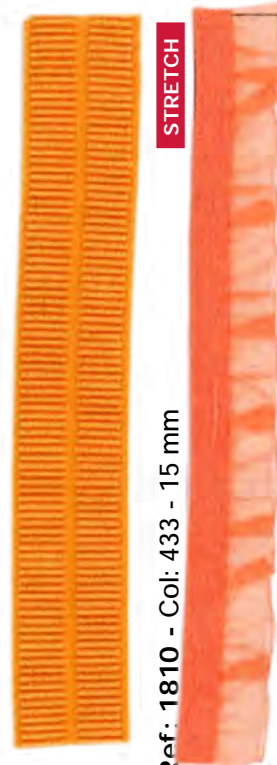
# Acidic Lingerie

Sexy & Fun



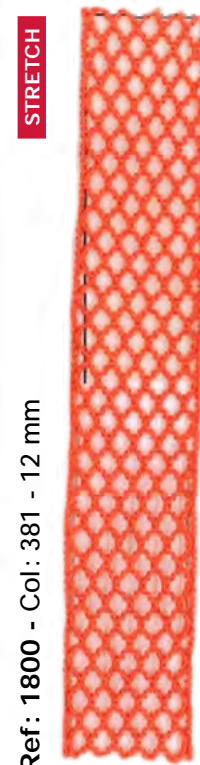
STRETCH

Ref: 2801 - Col: 281 - 37 mm



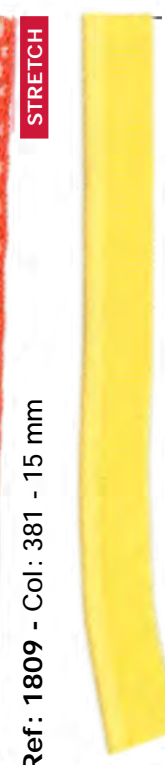
STRETCH

Ref: 1810 - Col: 433 - 15 mm



STRETCH

Ref: 1800 - Col: 381 - 12 mm



STRETCH

Ref: 1809 - Col: 381 - 15 mm



STRETCH

Ref: 1801 - Col: 235 - 9 mm



STRETCH

Ref: 1010 - Col: 369 - 15 mm



STRETCH

Ref: 1901 - Col: 605 - 25 mm



STRETCH

Ref: 2805 - Col: 324 - 16 mm

# Acidic Lingerie

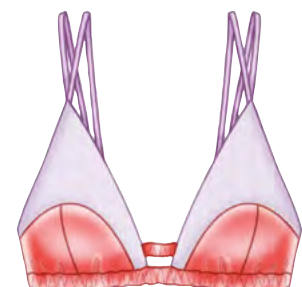
Sexy & Fun



Ref: i745 - Col: 2 - 10 mm



Ref: 0470 - Col: 25 - 15 mm



Ref: 0494 - Col: 584 - 15 mm



Ref: 0464 - Col: 380 - 15 mm



Ref: 0422 - Col: 227 - 15 mm



Ref: 0174 - Col: 230 - 5 mm



Ref: 0889 - Col: 382 - 5 mm



Ref: 0871 - Col: 389 - 4 mm

# Precious Monochromes



Ref: 7427 - Col: 201 - 40 mm



Ref: 0440 - Col: 245 - 20 mm



Ref: 1425 - Col: 518 - 8 mm



Ref: i703 - Col: 272- 10mm



Ref: 0070 - Col: 316 - 15 mm



Ref: 0421 - Col: 234 - 15 mm

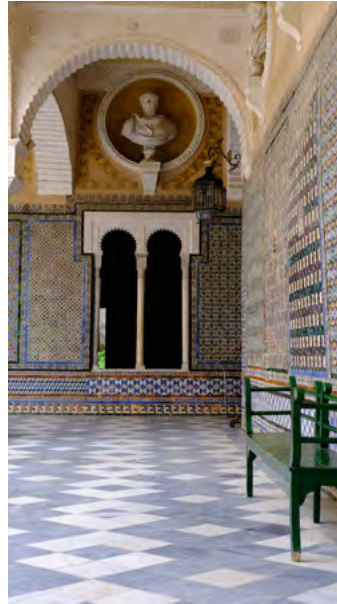


Ref: 3399 - Col: 121 - 20 mm

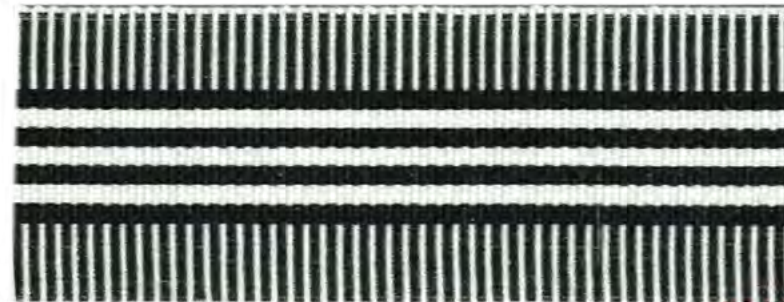
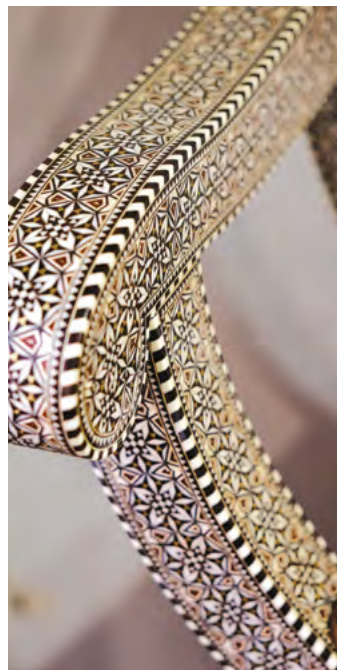


Ref: 2117 - Col: 116 -25 mm

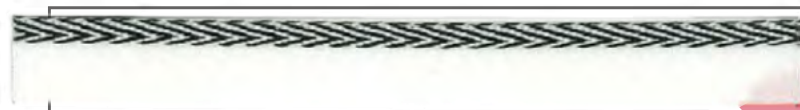
# Palace Decors



Ref: 7115 - Col: 528 - 18 mm



**NEW** Ref: 7034 - Col: 800 - 38 mm



**NEW** Ref: 1719 - Col: 800 - 10 mm



**NEW** Ref: 7462 - Col 2 - 34 mm



**NEW** Ref: 7463 - Col 2 - 32 mm



**NEW** Ref: 7123 - Col: 3 - 35 mm



Ref: 7134 - Col: 121 - 24 mm

# Refined ties and drawstrings



Ref: 1068 - Col: 230 - 6 mm



Ref: 1068 - Col: 577 - 15 mm



Ref: 1539 - Col: 407 - 15 mm



**NEW** Ref: 0852 - Col: 21 - 2 mm **STRETCH**



Ref: 1821 - Col: 328 - 5 mm **STRETCH**



Ref: 1539 - Col: 520 - 25 mm



Ref: 1820 - Col: 230 - 3 mm **STRETCH**



Ref: 1828 - Col: 230 - 16 mm **STRETCH**



Ref: 0889 - Col: 343 - 7 mm



Ref: 1707 - Col: 5 & 11 - 3 mm



# Soft & Delicate Pink

